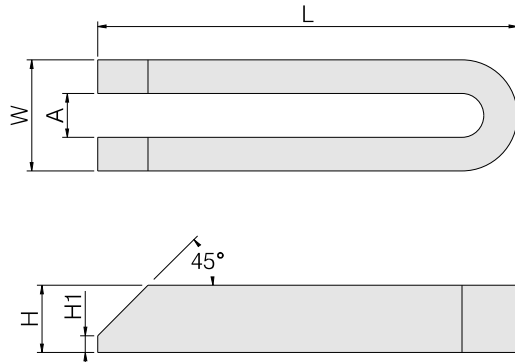


B1003 - U Clamp

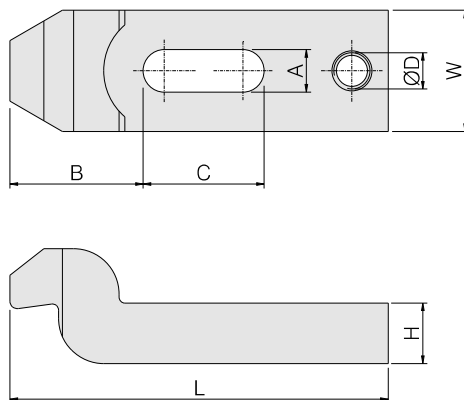
- ▶ Tempered steel
- ▶ Blackened



Part No.	A	L	For clamping screw	W	H	H1	Weight (Kg)
B1003-12-125	13	125	M12	38	24	6	0.58
B1003-12-160	13	160	M12	38	24	6	0.78
B1003-12-200	13	200	M12	38	24	6	0.95
B1003-16-160	17	160	M16	48	30	8	1.12
B1003-16-200	17	200	M16	48	30	8	1.41
B1003-16-250	17	250	M16	48	38	10	2.33
B1003-20-200	21	200	M20	52	38	10	1.86
B1003-20-250	21	250	M20	62	38	10	3.09
B1003-20-315	21	315	M20	62	38	10	3.93
B1003-24-200	26	200	M24	66	38	10	2.40
B1003-24-250	26	250	M24	66	38	10	3.03
B1003-24-315	26	315	M24	66	38	10	3.85
B1003-24-400	26	400	M24	66	48	10	4.92

B1006 - Cranked Clamp

- ▶ Tempered steel
- ▶ Blackened



Part No.	A	L	For clamping screw	W	H	ØD	B	C	Weight (Kg)
B1006-12-125	13	125	M12	40	20	M12	44.0	40	0.725
B1006-16-160	17	160	M16	50	25	M16	51.5	50	1.4
B1006-20-200	21	200	M20	60	30	M20	59.0	70	2.5
B1006-24-200	25	200	M24	70	35	M24	76.5	60	3.6